

## SAFETY INSTRUCTIONS:

- While handling the safe, particularly while installing it, we recommend to use suitable single protection devices and proper lifting devices complying with the product weight, such as stated on the label placed on the external side of the packing.
- While closing the door be careful not to crush your hand or your fingers between the front side and the safe-door itself.

## GUARANTEE CONDITION:

1. The product is guaranteed for 24 months from the date of purchase, which is proved by a document valid for fiscal purposes, issued by the seller and stating the seller's name and the date when the product has been purchased. The guarantee is operating if the certificate of guarantee is kept with one of the documents valid for fiscal purposes showing the identifying details of the product, and both of them shall be shown to the Technical Service Personnel if necessary.
2. For guarantee we mean the free of charge replacement or repair of the components of the product proving to be faulty from the beginning due to manufacturing defects.
3. If it is not possible to send the faulty product back to the assistance centres, can carry out repairs on site and the user shall pay a travelling allowance. Within the first guarantee month, repairs on site shall be carried out completely free of charge, except for repairs as per par. 5, for which charges are to be completely paid by the user. If the product is repaired by an authorized centre, the transport risks shall be to the user's charge. Transport charges are in any case always to the user's charge.
4. If the failure cannot be repaired or in case of repeated failure, due always to the same reason, the product shall be replaced - according to the manufacturing factory's firm decision. The guarantee for the new item shall go on up to the expiry of the first contract.
5. The guarantee does not cover inconveniences due to negligence or carelessness (the operating instructions are not kept to), faulty installation or maintenance, maintenance carried out by non authorized personnel, damages during transport, or to circumstances which are not due to manufacturing defects.
6. We refuse all responsibility for possible damages, direct or in direct, to persons or things due to a careless observance of the stated instructions, particularly the instructions concerning the product installation.

## CERTIFICATE OF GUARANTEE

KEEP THIS CERTIFICATE OUTSIDE THE SAFE TOGETHER WITH THE QUITTANCE OR THE RECEIPT NOTE FOR FISCAL PURPOSES

SPACE FOR THE QUITTANCE  
OR THE RECEIPT NOTE FOR FISCAL PURPOSES

### SAFE DATE

The guarantee starts from the date of the safe purchase, certified by the Quittance - Receipt note for fiscal purposes to be shown in case of need to the Service Operator.

Type:

Manufacturing month/year:

Check:

Seller stamp:



*Dear Customer,*

*thank you for buying a TECHNOMAX safe.*

*Hereby please find useful instructions for the installation of your safe as well as the guarantee conditions*

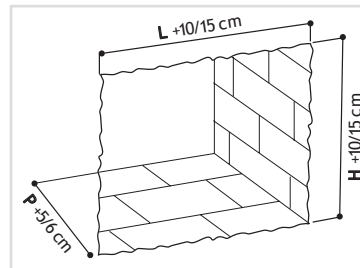
# GUARANTEE

## WALL SAFES:

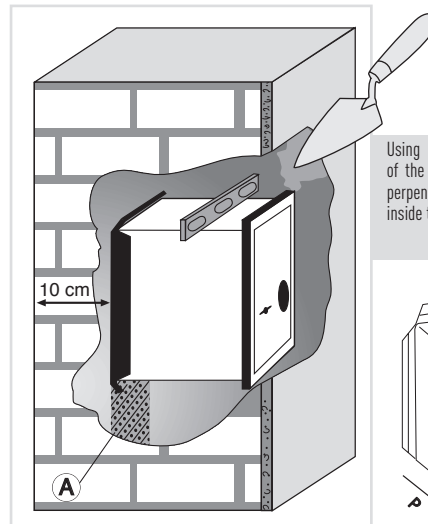
- A correct installation of the wall safe is most important to grant the safety of this product.
- Before walling the safe, check its correct operation by opening and closing the door (see attached instructions)
- The safe shall be walled with the door opening from left to right (the hinge shall be on the right), IT SHALL NEVER BE upside-down. Moreover it SHALL NEVER BE walled on the floor. The guarantee expires in case these provisions are not kept.
- The safe shall be walled keeping its front part 2 cm inside the wall line.

1. We recommend to install the safe in a secluded place, where it is difficult to use big tools (such as hammers, crowbars, picks, breaking tools, and so on.), but at the same time it shall allow the user to use easily the control devices on the door.
2. Choose a wall at least 10/15 cm deeper than the safe itself, avoiding walls subject to condensate, in order not to damage the lock inner devices.
3. Cut out an opening in the wall about 20 cm larger and higher than the safe front part, and 5/6 cm deeper.
4. Wet the internal surface of the wall cut out
5. Protect properly the front surface with a nylon film, to avoid damages to the control devices on the door
6. In order to increase the anchorage of the safe in the wall, we recommend to wrap the same using a welded net with 30 mm meshes, positioned about 30 mm from the 4 side walls of the safe. As an alternative, you can also use rod irons with 10 mm diameter to be located on the tearing proof fins on the rear of the safe. At the end, if you think that some suspicious people might reach the rear of the safe by opening the rear wall, it would be better to place on the rear wall of the cut out a rod iron net with 6 mm diameter and about 5 cm meshes..
7. Place the safe inside the opening (with the door opening from left to right, that is with the hinge of the right side), keeping its front part 2 cm inside the wall line.
8. By means of a wood table cover the safe front part, leaving a gap to be filled with concrete.

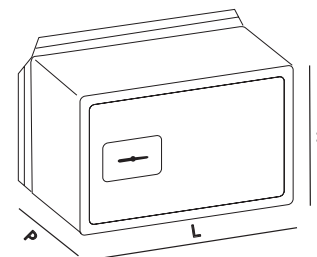
9. Wall the safe using a high strength cement mixture consisting in cement type CEM II/A-LL 42,5 R (UNI EN 197-1) and sand, carefully filling the exceeding space on the side and on the bottom of the safe. Do not use too much water. The use of quick-drying cement is unadvisable.
10. As soon as the mixture has hardened and after carrying out trimming, if necessary, remove the protections of the front and open the door, keeping it open at least 5 days so as to remove the humidity remains due to the walling operations.
11. Pay attention that water, cement or varnish do not enter the safe through the door perimeter, the lock or the other control devices during walling or wall painting. This is much more important if the safe is provided with an electronic lock or a sequence switch device



Cut out an opening in the wall as shown in the picture



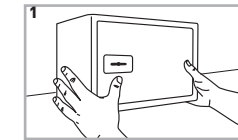
Using a wood table (A) placed as support of the rear part of the safe, place the same perpendicularly keeping the front part 2 cm inside the wall line



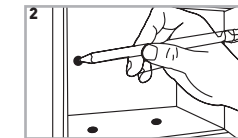
## FREE STANDING SAFES:

- A correct installation of the free standing safe is most important to grant the safety of this product.
- Before fastening the safe, check its correct operation by opening and closing the door (see attached instructions)
- The safe shall be fastened with the door opening from left to right (the hinge shall be on the right), IT SHALL NEVER BE upside-down. The guarantee expires in case these provisions are not kept.

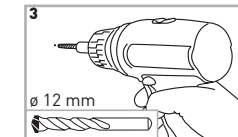
1. The safe is supplied with at least 4 fastening holes placed on the bottom and on the rear.
2. Fasten the safe by proper anchor bolts or other anchorage devices able to bear a minimum strength of 30 KN per anchoring hole (3000 kg). Safe must be anchored using at least 2 anchor points.
3. The wall or the floor must be able to bear a minimum strength of 60 KN (6000 Kg) in total.
4. The 4 small blocks supplied with the safe are fit for reinforced concrete class RcK 250 and stand an average ultimate tensile strength of 830 kg. In order to distribute better the stress, we recommend to use 4 of them.
5. In case of fastening to the floor or to walls made of hollow bricks, we recommend to use suitable chemical blocks.



Place the safe in the position you chose for its installation. If possible, we recommend to fasten the safe both to the wall and to the bottom.  
Make sure that in the wall or in the bottom where you intend to fasten the safe there are no current cables, gas pipes and so on.



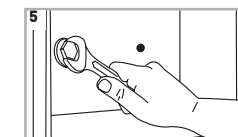
By means of a tool or a pencil, mark the centre of each fastening hole you are going to use on the wall and/or on the bottom.



Remove the safe and drill the wall using a cement drill. In case you use the plugs supplied with the safe, the drill to be used shall be  $\varnothing$  12 mm and the hole depth shall be at least 70 mm.



Place again the safe in the chosen position, centre the holes and put in the plugs.



Fasten strongly the plugs using a proper wrench