

# Installation- and operating instruction

## for the value-protection-cabinet safety grade V and LFS 30 for free positioning

With buying this value-protection-cabinet you have chosen a high quality product with a defined protection against burglary, safety grade V according to Euro-Norm EN 1143-1 and fire-protection LFS 30 according to Euro-Norm EN 15659. Please take the time to read this instruction completely and carefully.

### 1. Acceptance at the carrier's factory and checking of damages in transit

Please check your cabinet for possible damages in transit (dents, bumps, scratches etc.) before you sign the acknowledgement of receipt. Should the carrier refuse to give you enough time for checking, please sign the acknowledgement of receipt only with the notation „with reservation for the check“. Discovered damages have to be announced to the carrier in written form.

**Attention!** This locker is top-heavy and can fall over very quickly when door is open, when shelves on telescopic rails or hanging registers are pulled out. Material damages and risk of injury if carelessness! It is therefore strongly recommended that the unpacking and checking of the cabinet will be accomplished on a tight floor and not on a table or socket.

### 2. Checking the completeness and functionality

Please check your cabinet for quality, completeness and functionality:

- Is the cabinet the same as ordered?
- Have all ordered components been delivered?
- Can you open and close the door (the doors) easily?

Discovered differences have to be notified to the supplier immediately.

### 3. Installation & anchorage of the cabinet

Please check that the cabinet's load doesn't outrun the acceptable load of the route of transportation as well as the installation location **before installation**. Please provide for the floor condition absolutely as most problems appear here (covert cavities under the thin marble tops can be the reason of a crack, for example). Please get an advice of your structural engineer or architect in case of doubt.

The warranted protection against burglary according to safety grade V is only given if cabinets with a weight amongst 1000 kg are anchored professionally at the installation location. The aim of the anchorage is to prevent that thieves can take value protection cabinets with them and open it in a quiet atmosphere later.

The following things must be pointed out for anchoring:

- The floor in which the cabinet will be anchored has to be suitable for anchoring. In order to reach the characteristic loading capacity of the dowels the floor has to have a concrete grade of C20/25 or higher. If this is not given the location has to be changed if applicable. Floating screed or something like that isn't suitable for anchorage.
- There shouldn't be any cables, lines, pipes or something like that in the boring area.
- During installation you are not allowed to indicate more holes into the value-protection-cabinet. If you change the construction, the acceptance and potentially the insurance coverage will terminate

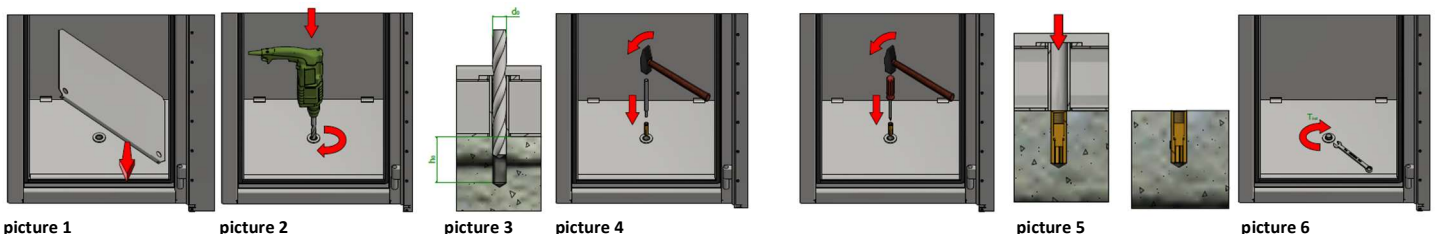
The anchorage of the value-protection-cabinet is effected by prepared holes in bottom which are visual after removing the bottom plate (**picture 1**). The diameter (**picture 2**) and depth of the drilled holes is chosen in this way that the installation can be accomplished after the principal of sticking. That means the drilled holes for the dowels and the installation of the dowels are directly affected by the drilled holes in the value-protection-cabinet (**pictures 2-6**).  $d_0=20\text{ mm}$ ,  $h_0=65\text{ mm}$ .

Suitable for anchoring are, for example: MKT stamping anchor type EM 16x65 (installation elements: dowels, u-shims, screws, stamping tool\*), or Upat USA stamping anchor M 16 (class 8.8) or an equal anchoring element of other producers.

Screw installation torque:  $T_{inst}=60\text{ Nm}$ .

\* - optional stamping tool which speeds up the installation, not attached to installation elements, can be replaced with any straight shaped tool with diameter/thickness lower than internal diameter of dowel (**picture 4**).

Please follow the installation guide of the particular dowel producer because only in this way the necessary minimum forces will be guaranteed.



### 4. Insurability

Insurability if professional anchorage\*:

Connection with a burglar alarm system will double the insurance sum accordingly.\*

*\*Informational values only. Please contact your insurance to find out the exact insurance sum!*

Please contact your insurance agent for all questions concerning the insurance. If a professional anchorage isn't possible because of technical reasons (floor heating etc.) please ask your insurance agent in this case.

**Please note:** In case of omitted or inappropriate anchorage your insurer isn't liable for the accrued damage of property or financial loss.

5. Opening of the vault serially equipped with a tested double bit lock:

- Insert the double bit key into the lock (the notch at the top of the key is directed towards the door handle)
- Turn the key clock-wise (other direction in case of the left door) all the way to the stop
- Turn the door handle clock-wise all the way to the stop
- Open the door

Closing of the vault is effected in reverse order as opening.

- Please note that the locking bolts are retracted before closing the door. Otherwise the locking technology may be damaged and a dysfunction might be the result.
- You can deduct the double bit key only when the lock is closed.

**Please note:** Two keys are as standard with the double bit lock. These wear off earlier or later depending on application frequency. If additional keys are needed, we will need the original key as a presentation for safety reasons. In this way we can eliminate that other people can order duplicate keys. Please contact your supplier for this subject.

If you lost the key the lock has to be replaced for safety reasons.

If your safe is equipped with a mechanical or electronic code lock, please note the **attached operating instruction**.

Very important:

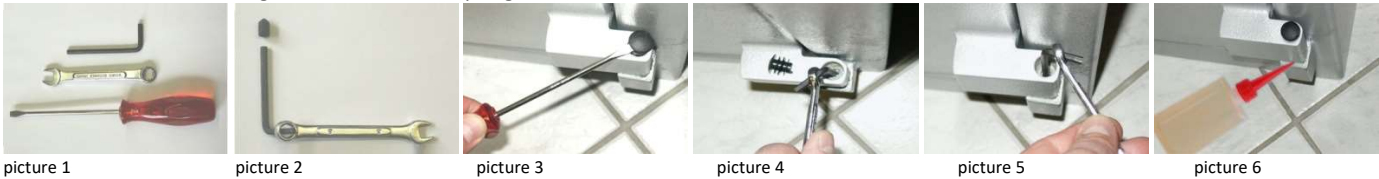
- Please change the factory code at first and keep it as a secret compared to not authorized people!
- Please attend to replacement of the batteries in time when you have electronic locks.
- For mechanical combination locks you should take your time for changing and adjust the numbers very exactly. Please note the adjustment and changing marks necessarily as most of the mistakes happen here.

Changing and a correct functional testing should always be done when the door is open. When you are sure that the lock operates exactly after many functional tests you can close the door.

6. Service and care

According to the using frequency the door has to be modulated in a new way sometimes. For this you need a little screwdriver, a hexagonal driver SW4 and maybe a little box wrench as extension (pictures 1+2).

- Annul the cover caps out of the door hinges with the screwdriver (picture 3).
- By turning the adjusting screw clockwise the door is raised up, contra clockwise it is lowered (picture 5). For this the adjusting screw of the door hinge is turned as long as the right position is achieved. After this the second door hinge has to be adjusted as well. The adjustment has to be executed in this way that the load of the door is hold equally from both hinges.
- Close the door hinges with the cover caps again. Finished!



**For greasing the door** insert some oil into the space between the upper and lower part (picture 6) and wipe off the excess oil if needed. All standard oils are usable. The frequency of greasing is based upon the using frequency but at least one time a year.

7. Operating safety and guarantee

- For damages of property and financial losses which appeared because of disregard of the standards for maintenance as well as incorrect using and operation, the producer will not assume liability.
- Keep the keys carefully, if you lose it you can open the door only with violence to get the content.
- We expressly point out that any warranty for safety and function expires in case of even little manipulation. This is applied for fire and burglary attempts in particular.